

K-640 Handheld Thermal Imaging Camera



Description

K-640 thermal imaging camera, built-in up to 640*512 (320,000 pixel) infrared detector, to provide clearer temperature images, more accurate and stable temperature measurement data; At the same time equipped with intelligent touch screen, manual focus lens, dual light imaging; Compared with M300, there are three more color plates, electronic doubling, timing photo, alarm photo, cloud service, real-time temperature analysis function, accurate test results, efficient diagnosis and processing.

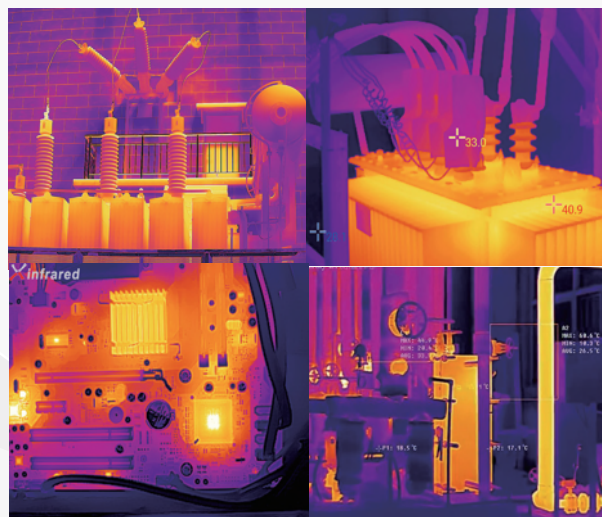


Characteristic

- Manual focusing is supported. Through manual accurate focusing, small targets of 1mm (0.1m away from the observed target) can be resolved.
- Supports customized point/line/area temperature analysis, and the temperature range is -20°C to +550°C.
- Powerful image fusion function, support 10 kinds of color swatches, with 5 million visible light camera to provide more rich and comprehensive information, easy to observe under complex conditions.
- Supports cloud services and real-time temperature analysis.
- Support Wi-Fi transmission, connect mobile APP, analyze and share temperature screen and temperature data at any time; Intelligent PC Analysis software, can reset the measurement Settings, one key generated detection report, easy to collate data analysis.
- 3.5-inch LCD capacitive touch screen, quick battery removal design, support tripod fixed use and handheld mobile use.
- Laser indication, fast positioning measurement target; The whole frame high and low temperature intelligent alarm, support custom alarm temperature; Regular photo, alarm photo.

Applications

- Electrical equipment maintenance
- Research and development
- Automobile maintenance
- HVAC maintenance
- Industrial temperature measurement



只为给你更好的测试体验，只为让我们成为更好的自己！

Keep Greater Testing, Keep Greater Together!

K-640 Handheld Thermal Imaging Camera



Thermal Imaging Module	
Detector Type	Vanadium oxide uncooled infrared focal plane detector
Detector Resolution	640*512
Infrared Spectral Band	8~14μm
Pixel Size	12μm
NETD	35mK
IFOV	1.13mrad
Frame Rate	25Hz
Focal Length	9.1mm
Field of View	48°*38°
Focusing Mode	Manual focusing
Temperature Measurement Range	-20 ℃ ~ 550 ℃
Accuracy	±2% or ±2℃, the larger value

Function	
Temperature Measurement	model center point/hot and cold tracking and temperature display
Customize point, line and area Temperature Measurement	Movable point/line/area temperature measurement; Line/area temperature measurement display hot spot tracking; The maximum temperature is displayed in line measurement, and the highest and lowest average temperature is displayed in regional measurement.
Temperature Measurement Unit	Degrees Celsius, degrees Fahrenheit, Kelvin
Emissivity Setting	0.01~1.00, step size 0.01
Ambient Temperature Setting	-10 ℃ ~50 ℃, step length 1 ℃
Distance Setting	1 to 20m, with a step length of 1m
Image Mode	Detail enhancement, infrared, visible light, picture in picture, fusion
False Color	10 kinds
Temperature Alarms	The maximum temperature and minimum temperature of the whole frame exceed the threshold alarm
Color Scale Temperature Range	Manual/automatic temperature range
Laser Pointer	Yes
Visible Light Camera	500w pixel
Electron Doubling	Visible light and infrared support variable times
Photo/video Storage	Infrared jpg image with temperature data + visible jpg image; Video without date

只为给你更好的测试体验，只为让我们成为更好的自己！

Keep Greater Testing, Keep Greater Together!

K-640 Handheld Thermal Imaging Camera



Specification	
Annotation Function	Voice annotation via microphone
Supported Languages	Simplified Chinese/English
Ruggedized Touchscreen Display	3.5 inch (landscape) 640 x 480 LCD
Picture Naming	Automatic naming, scanning two-dimensional code naming, manual input naming
Memory Card	Comes standard with a 32GB MicroSD card
Cloud Function	It can transmit shooting data to the cloud disk for sharing and secondary analysis in multiple clients. Supports automatic time synchronization.
Battery Type	Rechargeable lithium battery, removable
Power Interface	USB Type C
Connection Mode	USB, SD card, Wi-Fi (AP mode or networking mode)
Battery Charge Time	About 3h
Battery Life	About 3h
Power Management	Automatic shutdown: 5 minutes, 10 minutes, 20 minutes, off

Annex	
Analysis Software	PC&APP
Fixed Mode	Support tripod fixation
Operating Temperature	- 10 ℃ ~ + 50 ℃
Storage Temperature	- 20 ℃ ~ + 60 ℃
Relative Humidity	10%-95%, non-condensing
Drop	2m
Safety	IP54(IEC 60529)
Shock	Shock 25g (IEC 60068-2-27); Vibration 2.5g(IEC60068-2-6)
Size (H x W x L)	256.4 * 105.1 * 105.3 mm
Weight	About 670g
Certifications	CE/FCC/RoHS2.0
Accessories	5V2A power adapter, USB cable, SD card, documentation, battery holder charge

只为给你更好的测试体验，只为让我们成为更好的自己！

Keep Greater Testing, Keep Greater Together!